

# Westmead Innovation Ecosystem Fund

## Program Guidelines

Opening date	14:30 AEDST Tuesday 1 March 2022
Closing date and time	23:59 AEDST Monday 28 March 2022
Enquiries	If you have any questions, contact us at <a href="https://investment.nsw.gov.au/contact-us">investment.nsw.gov.au/contact-us</a> or +61 2 4908 4800
Date of guidelines released	1 March 2022
Type of grant opportunity	Open competitive



---

# Contents

---

Overview	3
1. About the Program	6
2. Eligibility criteria	9
3. How to apply	10
4. Assessment criteria	12
5. Assessment process	14
6. Successful applicants	15
7. Probity	16
8. Enquiries and feedback	16
9. Privacy	16
10. Government Information (Public Access) Act 2009	16
11. Copyright	17
12. Disclaimer	17
Appendix A – Research strengths	18

---

---

# Overview

The NSW Government’s vision for the Westmead Health and Innovation District (the District) is to be Australia’s premier health, research, and innovation district – an ecosystem for new discoveries, economic growth, and global recognition.

The District will support sustainable economic growth and job creation with a focus on world leading health care, medical research, and commercialisation, education, and training.

As part of this vision, the NSW Government has established the Westmead Innovation Ecosystem Fund (the Program) to help commercialise globally leading research in the District in fields such as cell and gene therapy, advanced therapeutics, cancer translational research, infectious diseases, immunology, and vaccinology. The District’s strength in clinical trials will also assist to create knowledge intensive jobs in the District.



## Background

The development of the District complements the NSW Economic Blueprint, Global NSW Strategy, and the Premier's COVID-19 Recovery Plan in particular in planning and precinct development which will help grow world-leading industries for NSW. These industries and jobs, focused on innovation, technology and world-leading research will help future proof NSW from economic impacts and provide more resilience in the economy.

The District is the largest integrated multi-hospital complex in Australia and has a strong competitive advantage as a result of globally leading medical research and innovation; excellent transport connectivity; undeveloped land for expansion; strong private sector interest; and abundant environmental and heritage assets waiting for renewal.

At the heart of the District, the Westmead Health Precinct (the Precinct) is one of Australia's largest and leading health, education, research, and training precincts. The Precinct includes over 400,000 square metres of health developments, including four major hospitals (Westmead Hospital, Sydney Children's Hospital Westmead, Westmead Private and Cumberland Mental Health Hospital), four major Research Institutes (Western Sydney Local Health District Research and Education, Kids Research, Children's Medical Research Institute, Westmead Institute for Medical Research), two university sites (University of Sydney and Western Sydney University) and NSW's largest pathology service.

## Core strengths

The core research strengths of the District include:

- advanced therapeutics (cell, gene, and phage therapies)
- translational cancer research
- infectious diseases, immunology, and vaccinology
- clinical trials.

Information on these research strengths, and examples of the types of innovative research being conducted in the District is provided in Appendix A.

## Westmead Innovation Ecosystem Fund

The NSW Government has committed up to \$10 million to:

1. Build capability across commercialisation, innovation, and entrepreneurship across the District. This will be achieved by:
  - growing the District's capacity to innovate, commercialise and collaborate with researchers, clinicians, and startups across the innovation ecosystem,
  - supporting novel idea progression from basic science to product development, prototypes, spinouts, and startups
  - supporting the District's researchers and clinicians with skills and commitment to establish spinouts and startups.
2. Drive development of sustainable innovation architecture and global engagement. This will be achieved by:
  - supporting and developing the innovation architecture in the Precinct
  - positively contributing to the future vision, goals and strategy of the Precinct and District
  - supporting the development of a sustainable innovation model including tech transfer principles and methodology
  - supporting innovation and entrepreneurship leadership and championing growth.
3. Create new opportunities and benefit the people of Western Sydney. This will be achieved by:
  - addressing health inequities through innovation.

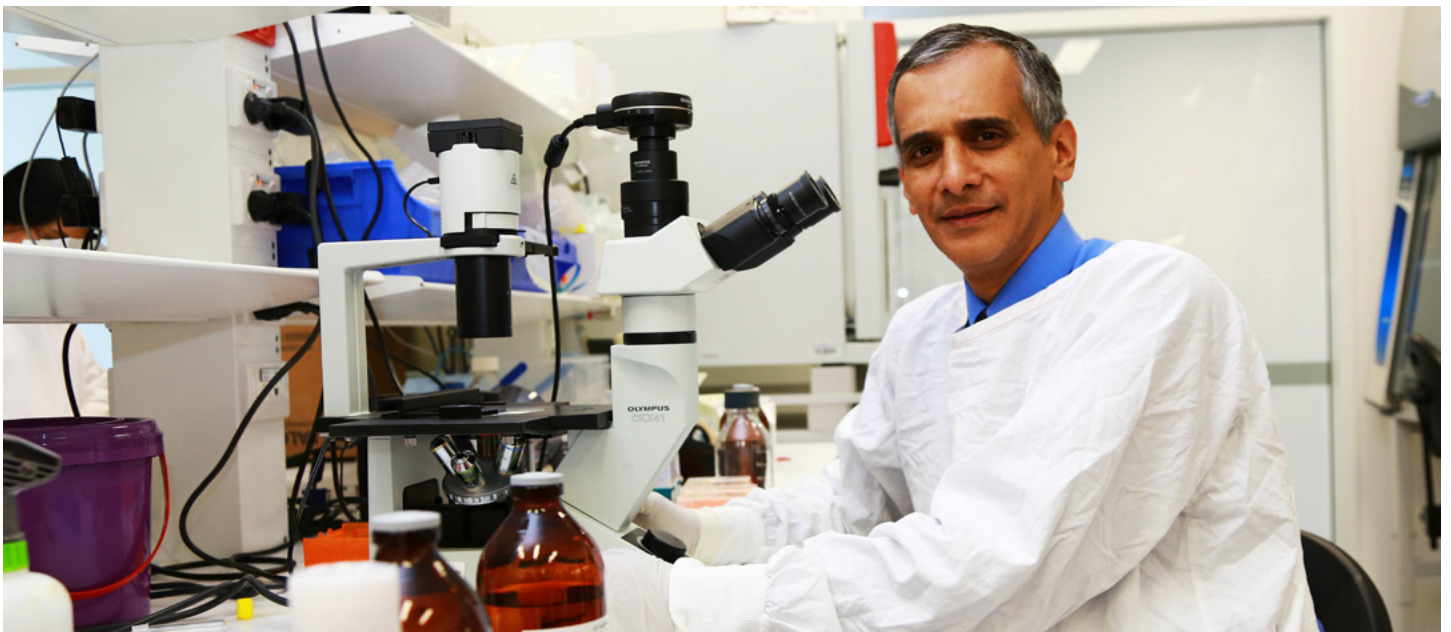
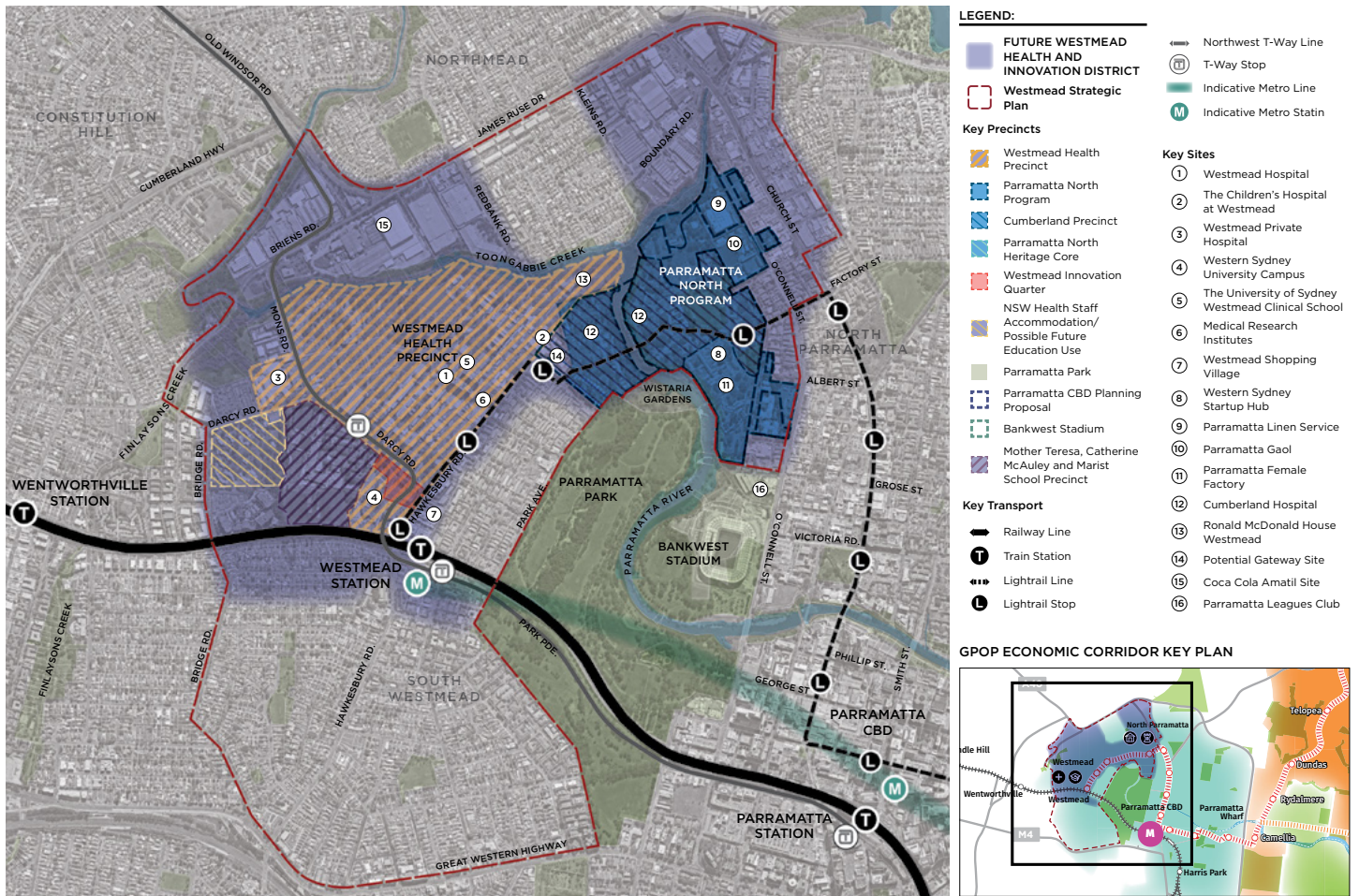


Figure 1: Future Westmead Health and Innovation District



# 1. About the Program

## 1.1 Objective

The Program will facilitate an innovation partner or partners to:

- build capability in the District across commercialisation, innovation, and entrepreneurship; and
- develop sustainable innovation architecture within the Precinct and District and facilitate global engagement.

## 1.2 Who is this for?

The Program will support a business or organisation (the Innovation Partner) to activate and administer either all or parts of the Program.

You must read this document before applying for the grant. This document sets out the purpose of the grant opportunity; the eligibility and assessment criteria; how grant applicants are considered and selected; and responsibilities and expectations in relation to the opportunity.

## 1.3 Program funding

Investment NSW will provide up to \$10 million for the Program. The minimum grant amount which can be awarded per application is \$1 million over four years. The maximum grant amount which can be awarded per application is up to \$10 million over four years. All grants are GST exclusive.



## 1.4 Service Categories

We are looking to engage Innovation Partner(s) with appropriate expertise and capacity to deliver services across the following three categories:

Category	Initiatives
Commercialisation	<ul style="list-style-type: none"><li>• Deliver professional business development, commercialisation expertise and advisory support based on international best practice for District researchers, clinicians, and startups.</li><li>• Deliver tech transfer, business, and commercialisation expertise to support successful market launch of the District's core research innovations, such as cell and gene therapy, cancer translational research, medical devices, artificial intelligence and virtual reality training simulations and advanced therapeutics.</li></ul>
Incubator and/or accelerator programs	<ul style="list-style-type: none"><li>• Deliver incubator or accelerator programs to support spinouts, attract startups, and facilitate connections with mentors, service providers and investors.</li><li>• Provide startups with affordable space within the District, including fit-out for use by spinouts and industry (startups &amp; SMEs), to be managed by the Innovation Partner.</li><li>• Construct and fit out facilities that provide shared access to specialised equipment such as, maker space, wet and dry laboratories, and computing equipment.</li></ul>
Global partnerships, promotion, and innovation architecture	<ul style="list-style-type: none"><li>• Attract relevant international health partnerships or agreements that lead to innovation outcomes. Partnerships or agreements may include Memorandum of Understandings (MoU's), joint clinical trials, joint ventures, and other commercialisation opportunities.</li><li>• Promote the District and respective health precinct partners including the Western Sydney Local Health District, Sydney Children's Hospital Network, Westmead Hospital, The Children's Hospital at Westmead, Children's Medical Research Institute and The Westmead Institute for Medical Research as a global leader in key areas of strength or competitive advantage, (e.g. cell and gene therapy, advanced therapeutics, cancer translational research, medical devices, infectious diseases, immunology and vaccinology, artificial and virtual reality simulations and clinical trials) or emerging research and innovation areas.</li><li>• Identify gaps and opportunities across the District, for example, intellectual property and tech transfer.</li><li>• Identify strategic opportunities to realise and promote commercialisation outcomes.</li></ul>

Applicants are able to apply to provide services in one, or more service categories.



Examples of initiatives an Innovation Partner may deliver include but not limited to:

- hosting commercialisation seminars or digital events, with content tailored to the District's core strengths to support local researchers, clinicians and entrepreneurs develop and apply commercialisation skills
- hosting of specialist workshops and/or training courses for District based researchers, clinicians and entrepreneurs focused on aspects relevant to commercialisation such as clinical trials, regulatory strategy, and intellectual property tailored to the core strengths of the District
- developing and facilitating an incubator and or accelerator program for startups and scaleups aligned with the District's core strengths
- provision of affordable desk space for startups operating in an industry consistent with the District's core strengths
- organising and coordinating networking events for entrepreneurs, researchers, clinicians, and health partners from the District, and to connect with potential customers, key service providers and investors
- coordinating seminars or networking events with global health partners
- development of digital platform(s) to efficiently connect ecosystem actors and increase transparency of ecosystem capability to those outside of the District
- engaging with industry stakeholders through roundtables, drawing comparisons to best practice overseas districts or conducting gap analysis to identify gaps and subsequent opportunities that will support innovation and commercialisation in the District.

You may submit an application that addresses one or more of the three categories outlined in this section.

## 1.5 Additional Innovation Partner requirements

Investment NSW expects initiatives funded through the Program to commence in August 2022. You are required to propose a timeline for establishing the Program in your application.

If you are successful, you will need to manage all aspects of the day-to-day running of funded initiatives including management of facilities, finances, and administration.

If your application considers delivering services under the category 'Incubator and/or accelerator programs', Investment NSW may also seek facilities such as:

- a minimum number of desks, with an allocation of affordable desk space for early-stage startups
- flexible working space for collaborative projects, meetings, workshops, and events
- basic prototyping facilities.

### Location

The Program is seeking the delivery of services across the District area, which includes the Precinct (Figure 1).

Innovation Partners must submit applications that target either the Precinct or broader District.

If your application considers delivering services in scope under the category 'Incubator and/or accelerator programs' you are required to detail in your application your preferred premises within the District.

### Opportunity to co-locate in the Precinct

Investment NSW recognises you may wish to locate within the Precinct to support the delivery of proposed services.

If you are interested in locating within the Precinct, please contact us at [investment.nsw.gov.au/contact-us](https://investment.nsw.gov.au/contact-us) or 02 4908 4800 to discuss this further.





## 2. Eligibility criteria

### 2.1 Who is eligible to apply for the grant?

To be eligible to apply for the Program, you must:

- be registered with an Australian Business Number (ABN)
- be registered for the purposes of GST
- have an account with an Australian financial institution
- be one of the following entity types:
  - a company incorporated under the Corporations Act (including a company limited by guarantee)
  - a not-for-profit organisation
  - government corporate entity.

You must also be able to:

- demonstrate the management experience, skills, and capacity to deliver the proposed services or project; and
- be financially viable and able to demonstrate that you are likely to remain so over the duration of the project.

If you are not one of the entities identified above, for example, if you are incorporated outside Australia but are able to meet all of the other criteria above, we will accept evidence from your Chief Executive Officer (CEO) or equivalent, that you will be an eligible entity type to enter into a grant agreement if you are successful.

If you are submitting a joint application, you must provide a letter of support for the project from the CEO or equivalent of each project partner.

### 2.2 Who is not eligible to apply for the grant?

You are not eligible to apply for the Program if you are:

- insolvent
- an individual
- partnership
- unincorporated association
- a Commonwealth, state, territory or local government agency or body excluding government corporate entities.

Investment NSW, at its sole discretion, may take other factors into account that may make a business ineligible for funding such as any person or business activity that could cause reputational or other risk to the NSW Government.



---

# 3. How to apply

Before applying, you must read and understand these Program Guidelines.

The Program has a two-stage application process. Applicants will submit a Preliminary Application. Preliminary Applications will assist us to identify applicants which have the required expertise and capacity to deliver the services and achieve the objectives of the Program.

Applicants assessed as having the required delivery expertise and capacity will be invited to submit a Detailed Application. Further information is provided in section 5.2.

Except as specified in these Program Guidelines, references to 'your application' are a reference to your Preliminary Application and any Detailed Application.

To apply you must:

- complete the Preliminary Application form at [treasury.nsw.smartygrants.com.au/westmeadfund](https://treasury.nsw.smartygrants.com.au/westmeadfund)
- provide all the information requested
- address all the eligibility criteria
- address all the relevant assessment criteria
- include all necessary attachments
- submit your application by the timelines outlined in section 3.3 Key dates.

If your Preliminary Application is successful, you will be invited to submit a Detailed Application.

You are responsible for ensuring your application is complete and accurate. Giving false or misleading information is a serious offence under the *Crimes Act 1900 No 40* (NSW). We will investigate any false or misleading information and may exclude your application from further consideration.

If you find an error in your application after submitting it, you should contact us immediately at [investment.nsw.gov.au/contact-us](https://investment.nsw.gov.au/contact-us) or by calling 02 4908 480. We do not have to accept any additional information, nor requests from you to correct your application after the closing time. You cannot change your application after the closing date and time.

If we find an error or information that is missing, we may ask for clarification or additional information from you that will not change the nature of your application.

You should keep a copy of your application and any supporting documents.

We will acknowledge that we have received your application after you submit through the online portal.

If you need further guidance around the application process or if you are unable to apply online, please contact us at [investment.nsw.gov.au/contact-us](https://investment.nsw.gov.au/contact-us) or by calling 02 4908 4800.

## 3.1 Attachments to the application

### Preliminary Application

To assess your Preliminary Application, we require you to provide the following documents with your application:

- maximum six A4 page pitch deck or proposal
- evidence of financial viability such as financial statements for the last three consecutive years or evidence of financial viability if statements are not available
- evidence of management experience, skills, and capacity to deliver the proposed services or project
- evidence of support from your CEO or equivalent.

Your application must address the General Criteria set out in section 4.1.

### Detailed Application

If you are invited to submit a Detailed Application, we will require you to provide the following documents with your application:

- a business plan including your proposal (maximum thirty A4 pages)
- a four-year budget forecast
- a risk management plan
- evidence of last three years' annual reports, if available
- any other attachments that will substantiate your submission (e.g. past program reports, KPI management methodology, and past performance references).

Your Detailed Application must address the General Criteria set out in section 4.1, as well as the Specific Criteria set out in section 4.2 as relevant to your proposal.

You must attach supporting documentation to the application form in line with instructions provided within the online form. You should only attach requested documents. We will not consider information in attachments we do not request.

## 3.2 Joint (consortia) applications

We recognise you may want to partner with other organisations to deliver the Program.

In these circumstances, you must appoint a 'lead organisation'. Only the lead organisation can submit the application form and enter into a grant agreement with Investment NSW.

The application must identify all other members of the proposed group and include a letter of support from each of the partners.

Each letter of support must include:

- details of the partner organisation
- an overview of how the partner organisation will work with the lead organisation and any other partner organisations in the group to successfully deliver the Program
- an outline of the relevant experience and/or expertise the partner organisation will bring to the group
- the roles/responsibilities of the partner organisation and the resources they will contribute
- details of a nominated management level contact officer.

You must have a formal arrangement in place with all parties prior to execution of the agreement.

## 3.3 Key dates

You must submit an application between the published opening and closing dates. We cannot accept late applications.

**Table 1: Expected timing for this grant opportunity**

Activity	Timeframe
Applications close for Preliminary Applications	28 March 2022
Notification to successful and unsuccessful applicants	11 April 2022
Applications close for Detailed Applications	16 May 2022
Notification to successful applicants	27 June 2022

The application close dates may be extended at the discretion of Investment NSW.

## 3.4 Questions during the application process

If you have any questions during the application period, please complete the form at [investment.nsw.gov.au/contact-us](https://investment.nsw.gov.au/contact-us) or call 02 4908 4800.

Investment NSW will endeavour to respond to emailed questions within three working days.



---

# 4. Assessment criteria

## Preliminary applications

We will assess your application based on the criteria set out below. Applications will be assessed in two stages as outlined in section 5.

Preliminary Applications must address the General Criteria set out in section 4.1. Investment NSW may invite successful applicants to submit a subsequent Detailed Application.

## Detailed applications

Detailed applications must address the General Criteria set out in section 4.1 and relevant Specific Criteria set out in section 4.2. Submitted Detailed Applications will be deemed to be your final application for the purposes of the Program.

The amount of detail and supporting evidence in your application should be commensurate with the number of categories, the degree of complexity and the value of the grant requested.

For more details relating to how to apply and the assessment process, please refer to section 3 (How to Apply) and section 5 (Assessment process).

---

## 4.1 General criteria

To allow us to assess your application against program objectives, your application must address all three General Criteria detailed in the table below.

Criteria	Description
Strategic	<ul style="list-style-type: none"><li>• Knowledge and understanding of the health, medical technology sectors needs and specific characteristics as they relate to the District.</li><li>• Prior experience and success in delivering related services, including previous examples, and outcomes achieved.</li></ul>
Commercial	<ul style="list-style-type: none"><li>• Relevant management experience, skills, and capacity to deliver the proposed services/ initiatives.</li><li>• Sustainable operating model leading to financial self-sufficiency including revenue generation.</li><li>• Viable operating model to deliver services and achieve milestones.</li><li>• Detailed rationale for costs and expenses.</li><li>• Services/initiatives represent value for money.</li><li>• Identification and understanding of commercial risks and appropriate risk mitigation strategies identified.</li></ul>
Technical	<ul style="list-style-type: none"><li>• Services can be implemented within stated timeframes and achieve proposed outcomes.</li><li>• Identification and understanding of technical risks and appropriate risk mitigation strategies identified.</li><li>• Delivery of services/initiatives in partnership with District members.</li></ul>

## 4.2 Specific criteria

If you are invited to submit a Detailed Application, to allow us to assess your application against program objectives your detailed application must address the Specific Criteria set out in the table below. You should only address the criteria relevant to your proposal.

You must also address the General Criteria outlined in section 4.1.

Category	Description
Commercialisation	<ul style="list-style-type: none"><li>• Previous experience and success developing high-potential health and/or medical technology innovations and intellectual property into successful business cases and proof-of-concept for global market launch.</li><li>• Previous experience and success delivering best practice supporting systems and processes to accelerate translational research and commercialisation outcomes and opportunities in a healthcare or other technology precinct, including market strategy development and technology transfer.</li></ul>
Incubator and/or accelerator programs	<ul style="list-style-type: none"><li>• Location/s provide required facilities and align with the purpose and objectives of the Precinct.</li><li>• Activities support the growth of spinouts and startups including providing startups access to knowledge, networks, mentors, investors, resources, and talent.</li><li>• Previous experience and success of delivering similar or relevant incubator, accelerator, or related operations.</li></ul>
Global partnerships, promotion, and innovation architecture	<ul style="list-style-type: none"><li>• Proven track record and delivery of innovation outcomes on a global scale, with relevant international and domestic partners, programs and linkages to clinicians, researchers, industry, and the District.</li><li>• Ability to promote the District and its members to local and international audiences, to proactively seek opportunities for collaboration and achieve outcomes.</li><li>• Marketing plan to promote the District's strengths and commercial opportunities for example in cell and gene therapy, advanced therapeutics, cancer translational research, medical devices, infectious diseases, immunology and vaccinology, artificial intelligence and virtual reality training simulations and clinical trials to the District, including startups, small and medium enterprises, venture capital investors, researchers, and clinicians.</li></ul>



---

# 5. Assessment process

The assessment of applications will be led by Investment NSW. Your application will be considered through a two-stage process. Where Investment NSW considers an application unsuitable or unsatisfactory against any criteria, it may exclude that application from further evaluation. Only eligible applications will move to the next stage. We consider eligible applications through an open competitive grant process.

## 5.1 Assessment of Preliminary Applications

Investment NSW will review your application (including attachments) against the eligibility criteria outlined in section 2.1 and assessment criteria outlined in section 4.1. We will consider your application (including pitch deck or proposal) based on how well it meets the General Criteria.

## 5.2 Assessment of Detailed Applications

If you are successful, you will be invited to submit a Detailed Application. We will review your Detailed Application (including attachments) against the relevant assessment criteria (see section 4).

We will consider your application on its merits, based on:

- how well it meets the assessment criteria outlined in section 4
- how it compares to other applications
- whether it provides value for money.

When assessing the extent to which the application represents value for money, we will have regard to:

- the overall objectives to be achieved in providing the grant
- the relative value of the grant sought
- the extent to which the evidence in the application demonstrates that it will contribute meeting the outcomes
- how the grant activities will benefit the District.

## 5.3 Who will assess applications?

An Assessment Panel (the Panel) formed by Investment NSW will assess each application on its merits and compare it to other eligible applications before recommending which grant applications should be awarded a grant. The membership of the Panel will be determined by Investment NSW in its sole discretion and will include representatives from Investment NSW, Greater Sydney Commission, Western Sydney Local Health District, and the Sydney Children's Hospital Network. The Panel will be chaired by Investment NSW.

We may ask external experts and advisors to inform the assessment process. Any expert and advisor will be required to perform their duties in accordance with Investment NSW Code of Ethics and Conduct and Privacy Policy.

On behalf of the Panel, Investment NSW may seek additional information about you or your application.

The Panel recommends to Investment NSW which applications to approve for a grant.

The Panel may recommend part-funding of proposals if there is insufficient funding available for the whole proposal or where only a component of the proposal is considered suitable/eligible.

## 5.4 Who will approve the grants?

The Panel will provide advice to the NSW Government on the suitability of each proposal for funding.

The NSW Government will approve the proposal and funding amounts.

## 5.5 Notification of application outcomes

We will advise you of the outcome of your application in writing.

Unsuccessful applicants will be notified via email and/or letter of the outcome of their application and will be offered a feedback information session.

# 6. Successful applicants

## 6.1 Notification

Successful applicants will be notified via email and/or letter.

If you are successful, we will advise you of any specific conditions attached to the grant including a request to keep the grant confidential for a period of time, if an announcement is likely to be made by the NSW Government.

## 6.2 Funding Agreement

Successful applicants will be required to enter into a funding agreement with the NSW Government in relation to the Program.

The NSW Government (including Investment NSW) makes no binding funding or other commitment to the applicant unless and until both parties have signed a funding agreement.

The funding agreement will require the successful applicant to provide a copy of all relevant insurances and any other relevant supporting documentation as requested by Investment NSW.

You should not make financial commitments reliant on this Program until Investment NSW have formerly advised that you are successful, and a grant agreement is signed and executed.

## 6.3 Specific legislation, policies, and industry standards

Whilst you are required to be compliant with all relevant laws and regulations, you will be requested to demonstrate compliance with the following legislation and policies:

- *Work Health and Safety Act 2011* (NSW).

## 6.4 How we pay the grant?

The grant will be payable upon the successful completion of certain tasks / activities or delivery of certain deliverables in accordance with the funding agreement.

Invoices for grant payments will be submitted and paid following each financial quarter end (i.e. March, June, September, and December).

Grants are assessable income for taxation purposes, unless exempted by a taxation law. We recommend you seek independent professional advice on your taxation obligations. We do not provide advice on your particular taxation circumstances.

## 6.5 How we monitor your grant activity

You must submit reports in line with the timeframes in the funding agreement. We may provide sample templates for these reports in the funding agreement.

We will expect you to report on:

- progress against agreed project milestones and outcomes
- contributions of participants directly related to the grant.

## 6.6 Evaluation

Investment NSW will evaluate the Program to measure how well the outcomes and objectives have been achieved. We may use information from your application and reports for this purpose. We may also interview you or ask you for more information to help us understand how the program impacted you and to evaluate how effective the program was in achieving its outcomes.

We may contact you up to three years after you receive your final grant payment associated with the Program for more information to assist with this evaluation.

## 6.7 Acknowledgement

All recipients of NSW Government funding should acknowledge this financial support in accordance with the Funding Acknowledgement Guidelines for Recipients of NSW Government Rebates available at [nsw.gov.au/branding/sponsorship-and-funding-acknowledgment-guidelines](https://nsw.gov.au/branding/sponsorship-and-funding-acknowledgment-guidelines)

You must seek our written consent prior to any significant public announcement, marketing, press announcements, or official launch in relation to the Program.



## 7. Probity

Investment NSW will make sure that the grant opportunity process is fair according to the published guidelines, incorporates appropriate safeguards against fraud, unlawful activities, and other inappropriate conduct.

An independent probity advisor will be engaged as part of this Program to provide guidance to Investment NSW on any issues concerning integrity, fairness and accountability that may arise throughout the application, assessment, and decision-making process. This will ensure decisions are made with integrity, fairness, and accountability, while delivering value for money for NSW.

### 7.1 Conflicts of interest

Any conflicts of interest could affect the performance of the Program. There may be a conflict of interest, or perceived conflict of interest, if Investment NSW staff, any member of a committee or advisor and/or you or any of your personnel:

- has a professional, commercial, or personal relationship with a party who are able to influence the application selection process
- has a relationship with or interest in, an organisation, which is likely to interfere with or restrict the applicants from carrying out the proposed activities fairly and independently
- has a relationship with, or interest in, an organisation from which they will receive personal gain because the organisation received a grant under the grant program.

You will be asked to declare, as part of your application, any perceived or existing conflicts of interests or that, to the best of your knowledge, there is no conflict of interest.

If you later identify an actual, apparent, or perceived conflict of interest, you must inform Investment NSW immediately.

Conflicts of interest for Investment NSW will be handled as set out in the Investment NSW Code of Ethics and Conduct.

## 8. Enquiries and feedback

Any enquiry you have about the assessment process or the outcome of your application for this Program should be sent to [investment.nsw.gov.au/contact-us](https://investment.nsw.gov.au/contact-us) or by calling 02 4908 4800.

If you do not agree with the way Investment NSW has handled your enquiry or complaint, you may wish to contact the NSW Ombudsman. The NSW Ombudsman will not usually look into a complaint unless the matter has been first raised directly with Investment NSW.

NSW Ombudsman  
Level 24  
580 George Street  
Sydney NSW 2000

## 9. Privacy

We treat your personal information according to the Investment NSW Privacy Management Plan available at [investment.nsw.gov.au/privacy](https://investment.nsw.gov.au/privacy) and the *Privacy and Personal Information Protection Act 1998* (NSW).

This includes letting you know:

- what personal information we collect
- why we collect your personal information
- who we give your personal information to.

Your personal information can only be disclosed to someone for the primary purpose for which it was collected unless an exemption applies.

Investment NSW may also use or disclose information about rebate applicants and rebate recipients under this rebate opportunity for reporting purposes.

## 10. Government Information (Public Access) Act 2009

Applicants should be aware that information in applications and all related correspondence, attachments and other documents may be made publicly available under the *Government Information (Public Access) Act 2009*. Information that is deemed to be commercially sensitive will be withheld.

The *Government Information (Public Access) Act 2009* makes government information accessible to the public by:

- requiring government agencies to make certain types of information freely available
- encouraging government agencies to release as much information as possible
- giving the public an enforceable right to make access applications for government information
- restricting access to information only when there is an overriding public interest against disclosure.





## 11. Copyright

This publication is protected by copyright. With the exception of: (a) any coat of arms, logo, trademark, or other branding; (b) any third-party intellectual property; and (c) personal information such as photographs of people, this publication is licensed under the Creative Commons Attribution 4.0 International Licence. The license terms are available at the Creative Commons website at: [creativecommons.org/licenses/by/4.0/legalcode](https://creativecommons.org/licenses/by/4.0/legalcode).

Investment NSW requires that it be attributed as creator of the licensed material in the following manner: © State of New South Wales (Investment NSW), (2022). You may also use material in accordance with rights you may have under the *Copyright Act 1968* (Cth), for example under the fair dealing provisions or statutory licenses. The use of any material from this publication in a way not permitted by the above license or otherwise allowed under the *Copyright Act 1968* (Cth) may be an infringement of copyright. Infringing copyright may expose you to legal action by, and liability to, the copyright owner. Where you wish to use the material in a way that is not permitted, you must lodge a request for further authorisation with Investment NSW.

## 12. Disclaimer

Investment NSW does not guarantee or warrant, and accepts no legal liability whatsoever arising from or connected to, the accuracy, reliability, currency, or completeness of any material contained in this publication. Information in this publication is provided as general information only and is not intended as a substitute for advice from a qualified professional.

Investment NSW recommends that users exercise care and use their own skill and judgement in using information from this publication and that users carefully evaluate the accuracy, currency, completeness, and relevance of such information. Users should take steps to independently verify the information in this publication and, where appropriate, seek professional advice.

The guidelines are subject to change at any time at the sole discretion of Investment NSW.



---

# Appendix A — Research strengths

The following are examples of innovative research being conducted at the District, illustrative of the District's core research strengths.

## Advanced Therapeutics: Cell, Gene, and Phage Therapies

Westmead has extensive expertise and knowledge in the field of advanced therapeutics. The Cell and gene therapy program bring together world class expertise in basic science and clinical medicine encompassing the entire translational pathway from basic science through to clinical trials. Recently they became the first teams in the world to successfully correct a disease, causing mutation at single nucleotide resolution in patient-derived liver cells in vivo, at clinically relevant efficiencies. Phage therapy is the last defence against the growing antimicrobial resistance and now a first choice for treatment. The advances in phage therapy are changing the healthcare environment, with a successful Medical Research Futures Fund grant awarded to support this growing area. With about 40 research staff involved in cellular therapeutics and gene therapy in the Sydney Cell and Gene Therapy, Westmead has access to the highest clinical and research experience in cell and gene-based therapeutics in Australia.

## Translational Cancer Research

Westmead is a hub for world-class cancer research, improving the link between research and clinical care. Westmead researchers have access to cutting-edge technologies, helping them to make breakthroughs in medical research and apply these discoveries to some of the world's most serious diseases, including cancer. Westmead's innovative and translational research programs capitalise on world-class research strengths. World-first initiatives include PROCAN® - the only one of its kind in the world, providing a home to the development of cancer treatment and cures, and INOVATe - a multicentre collaborative program aiming to integrate precision medicine into routine care and improve patient outcomes. Our basic and translational laboratory cancer research is closely integrated with the health system, with strong collaborative links with CMRI, WIMR and the Children's Cancer Research Unit (CCRU).

## Infectious Diseases, Immunology and Vaccinology

Westmead is a world-class centre for infection prevention and disease control with the newly finished NSW Biocontainment Centre to enhance state-wide preparedness to effectively respond to future pandemics and manage patients (adult and paediatric) with high-consequence infectious diseases (HCID). Westmead researchers are dedicated to tackling the health and socioeconomic consequences of emerging and re-emerging infectious diseases, with core facilities providing high quality end-to-end scientific services supporting flow cytometry, biobanking, genomics, AGRF and bioinformatics. Our leading research organisations and centres support the translational of research into the development of vaccines, new treatments and diagnostics for HIV, Hepatitis B and C, and inform immunization policy and planning by providing expert advice on vaccine preventable diseases in Australia. More recently, Westmead's networked gene technologies-capability has enabled mRNA development and production, and a world-renowned gene therapy program.

## Clinical Trials

Our inquisitive clinicians, clinical academics and clinical units prioritise partnerships with consumers, communities, and advocacy groups to facilitate increased participation in clinical trials. There are up to 1000 clinical trials taking place at one time within Westmead and over 100+ active industry partnered contract clinical trials, providing patients with access to cutting-edge treatments, including early phase clinical trials.

With leading expertise in the delivery of clinical trials, strong cross-campus collaboration, and an established track record of ground-breaking clinical trials across the human lifespan, Westmead is a leading global recruitment site for clinical trials.

---

## More information

 [investment.nsw.gov.au](https://investment.nsw.gov.au)

## Contact us

 [investment.nsw.gov.au/contact-us](https://investment.nsw.gov.au/contact-us)

 Phone: +61 24908 4800

© State of NSW 2022

